



oneM2M Certification PMD

Program Management Document (PMD)

- **Revision:** V1.0
- **Issued:** 2017-Feb-09
- **Prepared by:** TTA, AT4Wireless

Abstract:

This document describes requirements for the oneM2M certification program management.

List of Contents

- 1. Definition of terms, Acronyms and references 4**
 - 1.1. Definition of Terms..... 4
 - 1.2. Acronyms 5
 - 1.3. References..... 6

- 2. oneM2M Certification Scheme 7**
 - 2.1. Overview of oneM2M Certification Program 7
 - 2.2. Actors and Roles..... 7
 - 2.2.1. Applicant 7
 - 2.2.2. Authorized Test Lab (ATL)..... 7
 - 2.2.3. Certification Body (CB) 7
 - 2.2.4. oneM2M TST Working Group 8
 - 2.3. Product type..... 8
 - 2.3.1. Node Type 8
 - 2.4. Certification fee 9

- 3. Certification Process..... 10**
 - 3.1. Certification Process 10
 - 3.1.1. Apply..... 10
 - 3.1.2. Test..... 10
 - 3.1.3. Certify 11
 - 3.2. Registration of Products in the Certification Website 12
 - 3.3. Test Requirements Status List (TRSL)..... 12
 - 3.4. Test Case Categories 13

- 4. Certification Policy 14**
 - 4.1. Certification types 14
 - 4.1.1. New product..... 14
 - 4.1.2. Product change..... 14
 - 4.1.3. Rebranding 14
 - 4.2. Waiver Process..... 15

- 4.3. Dispute Resolution Process..... 16
- 4.4. Certification validity and revocation 16
 - 4.4.1. Certification Violations 16
- 5. Certification Requirements..... 18**
 - 5.1. Membership 18
 - 5.2. Testing Scope 18
 - 5.2.1. Conformance Testing..... 18
 - 5.2.2. Interoperability Testing..... 18
 - 5.3. ICS and IXIT 18
 - 5.4. Test Plan 19
 - 5.5. Test Result Report..... 19
 - 5.6. Compliance Folder 19
- 6. Test Equipment Requirements..... 20**
- 7. Certification Logo 21**
- 8. ATL Requirements..... 22**
- 9. Annex A. Application Form 23**
- 10. Annex B Waiver Request Form 24**
- 11. Annex C ATL Application Form 25**
- 12. Annex D Product Change Declaration 26**
- Revision History 27**

1. Definition of terms, Acronyms and references

1.1. Definition of Terms

Applicant	Vendor, OEM, manufacturer, etc., that is requesting Certification of a product that has implemented oneM2M standard.
Authorized Test Lab (ATL)	A company with testing facilities authorized by oneM2M Certification Body(CB) that can perform oneM2M certification testing
Certification application	The required information completed by Applicant for CB to start the certification process.
Certification Body (CB)	A legal entity that provides certification services on products that have fulfilled oneM2M certification process and is responsible for the validity of the certification towards oneM2M specification. A CB can also act as an ATL to perform certification test or authorize a 3 rd party Test Lab(ATL) to perform the testing.
Certificate of Conformity	A document issued by the CB for the product that has met oneM2M certification requirements. The Certificate of Conformity grants the rights to use oneM2M certification logo on the certified product.
Conformance testing	<p>A process to determine whether implementation is compliant to specified protocol standard by test tools simulating protocol with test scripts executed against the implementation under test.</p> <p>The main purpose of oneM2M Conformance Testing is for checking oneM2M protocol primitive messages.</p>
Compliance folder	Folder that stores evidence and information on the compliance of product certification requirements.
Component	One of oneM2M product type as software that can be embedded to create the End Product for manufacturers.
End Product	oneM2M product for consumers that claims to have implemented at least one node types
Interoperability testing	<p>Testing of end-to-end functionality between at least two devices as required by the related standard(s).</p> <p>The purpose is to check the end-to-end functionality in accordance with oneM2M binding protocols (HTTP, CoAP and MQTT) and Serializations (XML and JSON) for oneM2M certification.</p>
Parent Product	Original certified product from which new product is inherited the functionality. The new product introduces differences in design or manufacturing compared with the parent product.
Test Requirement Status List (TRSL)	Provides information regarding the current validation and verification of test cases and test platforms for oneM2M certification.
Test Plan	Set of test cases to be executed to certify a product according to the TRSL
Waiver	Request by a vendor to skip one or more certification requirements during the certification process of a product.

1.2. Acronyms

ADN	Application Dedicated Node
ASN	Application Service Node
ATL	Authorized Test Lab
CB	Certification Body
CT Ad-Hoc	Certification Ad-Hoc
CV	Curriculum Vitae
DoC	Description of Changes
ICS	Implementation Conformance Statement
IoT	Internet of Things
ISO	International Organization for Standardization
IXIT	Implementation eXtra Information for Testing
IN	Infrastructure Node
MN	Middle Node
OEM	Original Equipment Manufacturer
PCD	Product Change Declaration
PMD	Program Management Document
TC(s)	Test Case(s)
TRSL	Test Requirements Status List

1.3. References

- [1] Test Requirements Status List V 1.0
- [2] TS-0017: Implementation Conformance Statements (ICS)
- [3] TS-0018: Test Suite Structure and Test Purposes (TSS&TP)
- [4] TS-0019: Abstract Test Suite(ATS) and Implementation eXtra Information for Test
- [5] oneM2M Certification Interoperability Test Specification V1.0
- [6] TS-0013: Interoperability Testing
- [7] oneM2M Certification ICS&IXIT V1.0
- [8] oneM2M Certification Logo Usage Guideline V 1.0

2. oneM2M Certification Scheme

2.1. Overview of oneM2M Certification Program

The oneM2M Certification program is intended to create an ecosystem of certified products that ensures interoperability among certified products. This program is for the compliance of oneM2M standards in products and services.

The oneM2M Certification is a LOGO program, NOT a compulsory program. It will represent to market that oneM2M products and services meet oneM2M Specification and Test requirements which ensure interoperability.

2.2. Actors and Roles

2.2.1. Applicant

The Applicant is the entity, manufacturer or vendor of a product that makes request to oneM2M Certification Body (CB) to certify a product according to the oneM2M certification program.

2.2.2. Authorized Test Lab (ATL)

The Authorized Test Lab is authorized by the oneM2M CB to perform certification testing, as a Test Provider, for a product or service certification.

The CB may act as an ATL or may appoint an ATL to act as a 3rd party Test Lab.

2.2.3. Certification Body (CB)

The Certification Body is a legal entity that performs the following tasks:

- ✓ Must be a participating member of oneM2M (Partner or an Individual Member).
- ✓ Communicates with applicants to receive certification request to certify oneM2M products according to oneM2M certification specification(s).
- ✓ Decides if the testing is performed at its own facilities or if it is performed by an Authorized 3rd party Test Laboratory (ATL) that a CB can delegate the execution of testing.
- ✓ Assesses documentation provided by the applicant of the product to be certified and the applicant itself.
- ✓ Performs certification testing (unless the testing is delegated to its Authorized 3rd party Test Lab). Testing may be run in its own lab or via a web-based interface.

- ✓ Uploads the certification result to the oneM2M standard certification webpage. The certification results will indicate the certified product details, the vendor and the CB handling of the certification process.
- ✓ Responsible for the validity of the certification result is compliant to oneM2M specification(s)
- ✓ Grants and issues appropriate certificate.

2.2.4. oneM2M TST Working Group

The oneM2M TST Working Group (WG) identifies and defines test requirements for the oneM2M implemented systems and the services. The oneM2M TST WG also develops and maintains a set of specifications for conformance and interoperability testing. The CB shall develop and use test cases based on oneM2M test specifications generated by TST WG for conformity. If a CB includes new set of specifications, it will be submitted to the oneM2M TST WG as a contribution.

2.3. Product type

For oneM2M certification, product type consists of End Product and Component as follows;

- **End Product** is a product that claims to have implemented at least one of oneM2M node types.
- **Component** is an implementation of one or more of embedded oneM2M node types as software that is used to create the End Product.

2.3.1. Node Type

ADN (Application Dedicated Node)

An ADN is a Node that contains at least one Application Entity (AE) and does not contain a Common Services Entity (CSE).

Example of ADN could be the constrained M2M device such as a IoT sensor, App (Application) or middleware of IoT device.

ASN (Application Service Node)

An ASN is a Node that contains one CSE and contains at least one AE.

Example of ASN could be the M2M device such as the IoT sensor with the application.

MN (Middle Node)

An MN is a Node that contains one CSE and contains zero or more AEs.

Example of MN could be the M2M device such as the IoT Gateway.

IN (Infrastructure Node)

An IN is a Node that contains one CSE and contains zero or more AEs. There is exactly one IN in the infrastructure domain per oneM2M service provider.

Example of IN could be the oneM2M device such as the IoT server platform of the service provider.

2.4. Certification fee

The cost of oneM2M certification is classified according to the node types as follows,

- ✓ IN (Infrastructure Node): USD 5,000
- ✓ MN (Middle Node): USD 5,000
- ✓ ASN (Application Service Node): USD 2,500
- ✓ ADN (Application Dedication Node): USD 500

The most up-to-date certification fee can be found on the oneM2M Certification Website, www.oneM2Mcert.com. The certification fee applies to the initial certification request as well as product change (excluding minor change) and rebranding. The applicant shall pay the certification fee to CB for the certification of the product.

The certification fee excludes the cost of testing by the ATL. The cost of ATL testing for certification is a business establishment between the applicant and the ATL.

3. Certification Process

3.1. Certification Process

The objective is to provide applicants with simple and easy process to adds real value for certification.

The Certification process is composed of 3 steps as follows:

- ✓ Apply
- ✓ Test
- ✓ Certify

3.1.1. Apply

The applicant selects the most appropriate CB and ATL from the list on the website (www.oneM2Mcert.com), and submits an application form (See Annex A), Implementation Conformance Statement (ICS) and Information eXtra Implementation Testing (IXIT).

Once the applicant has submitted the appropriate documents, the CB will begin the review process. The CB may contact the applicant if any change or additional information is required.

The applicant shall agree to the oneM2M certification policies as detailed in this Program Management Document.

3.1.2. Test

After completion of the 'Apply' step, the CB will generate a Test Plan that shows the applicable list of test cases based on such as Application Form, ICS and IXIT, and send the generated test plan to the selected ATL.

The ATL will indicate the number of test samples required and will make request for other accessory or documents as necessary. The ATL may request product information if changes are deemed necessary in the ICS and IXIT document. Other additional information such as the user manual of the product to be certified may also be requested.

The ATL will perform applicable test cases according to the test plan provided by the CB and will create a test result report as an input to the CB and the applicant.

3.1.3. Certify

After completion of 'Test' step, the ATL must submit the test result report to the CB.

The CB will review and assess the test result report and related documents. When all certification requirements are met, CB will issue the oneM2M certification for the product.

The CB will maintain a list of certified products on the www.oneM2MCert.com which will also be referenced by www.oneM2M.org. The certification Listing will include information such as Product Name, Product Vendor, Product Type, etc.

The figure 1 below shows a certification work flow.

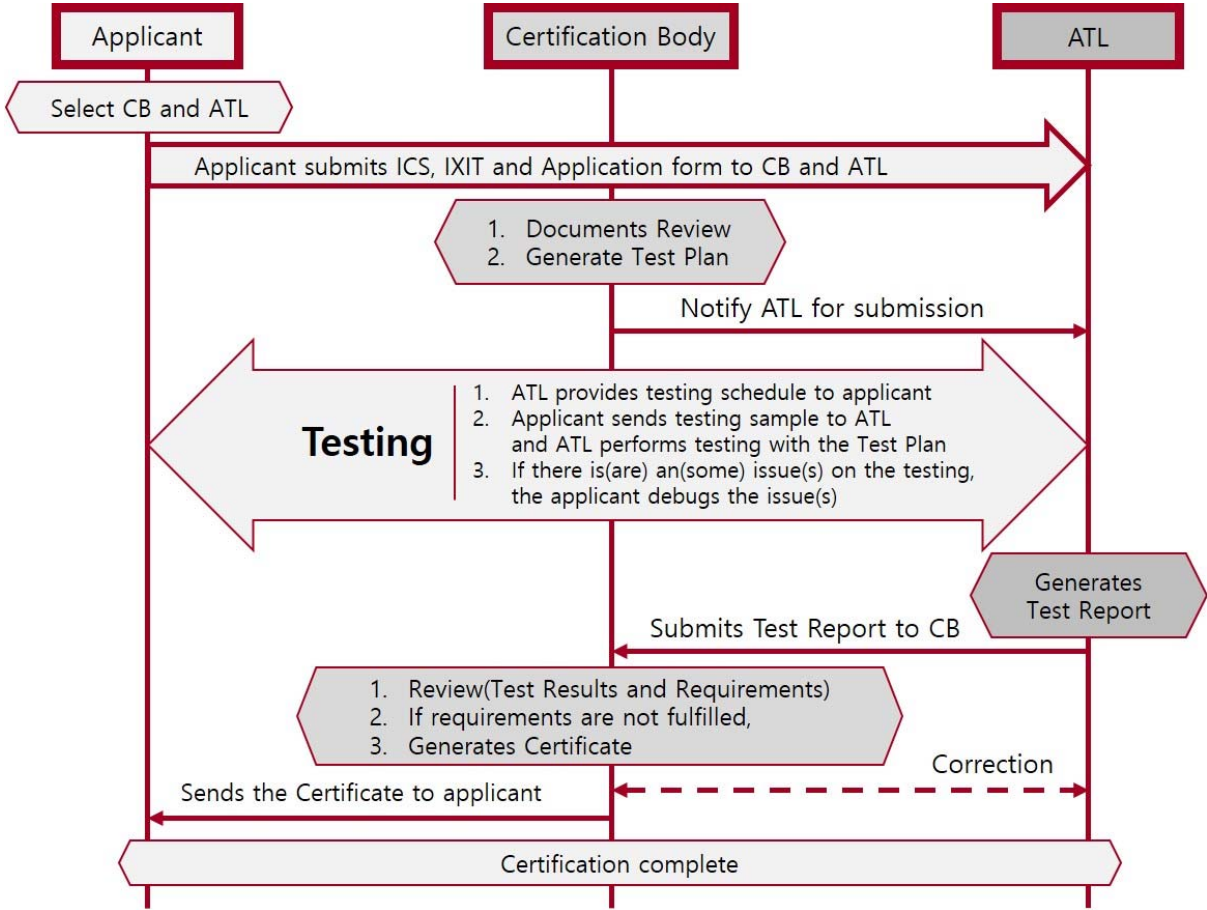


Figure 1. Certification process work flow

3.2. Registration of Products in the Certification Website

The CB is responsible for updating and maintaining the list of certified products on the oneM2M certification website after the certification requirements is fulfilled.

The certified products list includes the following information for all certified product.

- ✓ Product name
- ✓ Link to the product(company) webpage
- ✓ Product vendor
- ✓ CB (responsible of the certificate)
- ✓ Product type
- ✓ Certification version
- ✓ Listing date
- ✓ Certificate
- ✓ Product details

The table 2 below shows the listing information of certified products.

Product Name	Product webpage	Product Vendor	Certification Body	Product Type	Certification Version	Listing Date	Certificate	Product Details

Table 1 An example of List of Certified products

3.3. Test Requirements Status List (TRSL)

The TRSL provides information regarding current validation and verification of test cases for oneM2M certification to be used for test plan generation. Issue of an update to the TRSL shall be managed and approved by the CB.

The TRSL defines the status of each test case that contains the following information;

- TC Identifier – Test Case Identifier
- Description – description of the test case
- Current requirement
 - Test specification number and version
 - Test case category (see Section 3.4)
 - Available date to indicate the start of a graceful period for the activation of the test case. This test case may or may not be applied for certification.

- Active date to indicate the start of the activation of test case; this test case shall be used for certification.
- Associated notes
- Previously published requirement
 - Test specification number and version
 - Test case category (see Section 3.4)
 - Status
 - Associated notes
- Informative
 - Test platform – validated test platforms for both current and previous ones

3.4. Test Case Categories

To satisfy the oneM2M certification testing requirements for categories listed below, appropriate test case shall be applied to test the test equipment identified under equipment requirements.

Category P

This is a provisional state. Test cases have NOT been finalized or validated and are NOT ready for testing. These test cases are NOT required for certification.

Category V

This is a validated state where test cases have been confirmed by the CB that these work on several designated equipment. These test case are NOT required for certification as the related feature for these test cases have not been 'activated' by the CB for certification.

Category A

This is an active state. These are selected by the CB from Category V test cases and are required for certification.

Category D

This category is for test cases that have been downgraded. If a vendor or CB indicates that a test case is implemented incorrectly, this test case will be 'downgraded'. This test case is no longer an active state and thus cannot be used for certification until correct update is applied and back to category A.

4. Certification Policy

4.1. Certification types

4.1.1. New product

Any product that is certified using oneM2M standard specification for the first time.

4.1.2. Product change

If any change to the original certified product is made, it should be notified to the CB to determine the change of certification types and procedure.

Product Change Type	Description	Testing Scope	New Certification issue (Yes or No)
Major	Change impacts all oneM2M functionality and is regarding as a new product	Full Re-testing	Yes
Partial	Change impacts a portion of oneM2M functionality	Additional testing of new functionality and/or changed functionality	Yes
Minor	Change does not impact oneM2M functionality (e.g., add another model name)	No testing required	No

Table 3 Description of Product Change

4.1.3. Rebranding

Rebranding certification is issued to an already certified product that acquired a new name, term, symbol, design, or combination thereof is created for an established brand from different vendor.

Below is an example of rebranding;

- ✓ Company A produces and supplies an oneM2M certified product in the market and company B re-brands company A’s certified product as their product under company A’s permission.

Due to a rebranded device is identical to a certified device, a new certification is issued but no testing will be performed. The certification fee is same as the new product certification fee.

4.2. Waiver Process

The waiver process is for CB to handle special circumstances when an applicant makes a request to exclude one or more of certification requirements. This testing exemption for specific certification requirements encourage some products are certified earlier and released in the market.

The waiver process is allowed only for those cases where a product under certification does not have the capability to demonstrate compliance with any of the certification requirements with obvious reasons such as specification or test tool problems.

An applicant may request for waiver process and will provide the CB with the detailed information for the request for waiver process. The CB will determine whether waiver process will be approved based on the information provided by the applicant. The submission of a waiver itself does not regard as an automatic approval of the waiver process.

The waiver request form will be submitted by an applicant available in Annex B of this document.

The CB will determine and inform the applicant and the ATL of the response of the waiver request within 7 working days of the submission of the waiver request.

All waiver requests are treated confidential and will only be disclosed to the applicant and the ATL involved in the testing and certification process.

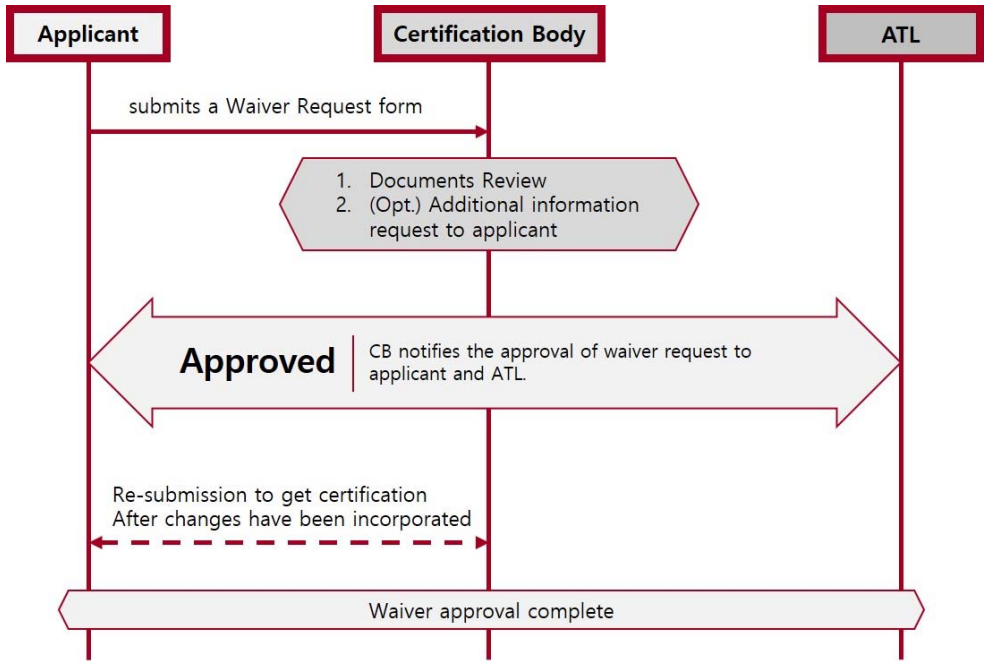


Figure 2. Waiver process work flow

4.3. Dispute Resolution Process

When performing certification testing, it could happen that some issues occur during testing that affect the conformance and interoperability between testing tool (reference device) and the product under test, normally it is expected that parties involved will communicate to solve any issue, based on their commercial agreements. The issues related to validated test cases, the CB should find and solve the solution such as testing or discussion agreed by all parties considering independence and confidentiality. If there is no problem in the validated test cases, the applicant has to pay the cost for this process.

If the parties involved cannot reach an agreement, and the certification process is blocked for over a 30 days, any involved parties may ask oneM2M CB to start an arbitration process.

4.4. Certification validity and revocation

The oneM2M certification is valid in perpetuity.

However, a certification may be suspended and/or revoked if one or more of certification violations listed below are found and the vendor does not provide adequate resolution.

4.4.1. Certification Violations

The oneM2M CB defines certification violation as follows;

- ✓ A certified product deployed in the market has undergone hardware and/or software modification since its certification and the vendor does not inform the CB of these modifications.
- ✓ Information included in the ICS and IXIT documents provided for certification is not in sync with the actual features of the product deployed in the market. For example, it is discovered that a product supports an optional feature that was not declared for certification and was excluded in the testing scope for certification.
- ✓ A vendor uses the oneM2M certified logo on a product that is not oneM2M certified.
- ✓ A vendor performs a product change (major or partial) of a certified product and deploys the product in the market, using the original oneM2M certification logo without re-certifying the product.

The oneM2M CB may audit the vendor randomly to ensure proper usage of oneM2M certification. Any entity may report to the oneM2M CB that a certified product does not comply to certification.

If the oneM2M CB becomes aware of improper use or possible certification violation, the CB may begin the audit process to verify if any certification violation. If the violation pertains to a non-certified product using oneM2M certification logo, the CB will take appropriate legal actions based on logo trademark right. However, if the violation pertains to a certified product, the CB will contact the vendor to ask for clarifications on the discovered issue.

The CB will review the information provided and the CB may also request for additional testing. However, any cost associated with the additional testing will be levied to the vendor according to the test scope defined by the CB.

If the CB finds that there is a certification violation, the CB will notify the vendor of the violation in no more than 14 days. The vendor will acknowledge the reception of the notification and inform the CB of its agreement or disagreement of the certification violation.

If the vendor agrees with the certification violation, it will provide a resolution plan to solve the violation in 30 days. Once the resolution plan is agreed between the vendor and the CB, the vendor shall correct the issue in no more than 60 days.

If the vendor does not agree with the certification violation, the vendor shall provide a written evidence to justify its position in 14 days. The CB will determine the justification and if the CB does not agree with the justification, the CB will notify the vendor of the certification suspension and the CB will revoke the certification if the no further action is provided by the vendor within 60 days

The certification will be suspended if;

- ✓ The vendor fails to acknowledge reception of the formal notification of the certification violation within 14 days of notification of violation,
- ✓ The vendor fails to provide a resolution plan for the certification violation within 30 days after the notice of the certification violation,
- ✓ The vendor fails to implement the agreed resolution plan within 60 days of agreement with CB
- ✓ The vendor does not make any effort to resolve the violation within 14 days after CB does not agree with the vendor's justification.

The certification will be revoked completely if;

The vendor fails to provide further action within 60 days after CB notify the vendor of the certification suspension

5. Certification Requirements

5.1. Membership

Any vendor may apply for oneM2M certification to oneM2M CB regardless of their membership with oneM2M.

5.2. Testing Scope

5.2.1. Conformance Testing

The purpose of oneM2M Conformance Testing is for checking oneM2M protocol primitive messages.

Currently, oneM2M is in development of conformance test specifications as follows;

- ✓ TS-0017[2]: Implementation Conformance Statements (ICS)
- ✓ TS-0018[3]: Test Suite Structure and Test Purposes (TSS&TP)
- ✓ TS-0019[4]: Abstract Test Suite (ATS) and Implementation eXtra Information for Test, ATS is based on TTCN-3 test architecture

The conformance test specification is being developed by oneM2M Testing Working Group s(WG6) now and the CB might add required conformance test cases into the certification program when available and necessary.

5.2.2. Interoperability Testing

The purpose of oneM2M Interoperability Testing is for checking the end-to-end functionality in accordance with oneM2M binding protocols (HTTP, CoAP and MQTT) and Serializations (XML and JSON). Interoperability test specification[5] for oneM2M certification is developed by the CB based on TS-0013 (Interoperability Testing)[6].

5.3. ICS and IXIT

The ICS[7] document is a statement of what is supported on implemented oneM2M product. The IXIT[7] document includes extra information to carry out the testing. Both documents have to be submitted by applicants to the CB and the ATL.

5.4. Test Plan

The Test Plan is the list of test cases that are required to certify a product. A Test Plan for a product is obtained based on Test specification, ICS and TRSL.

In the case of Product change and Rebranding certifications, the Certification Body will make the decision on whether a part of the test plan can be reused from the parents' certification testing evidences. The CB will take this decision after review and analysis of the applicant PCD (Product Change Declaration)[Annex D] document.

5.5. Test Result Report

The test result report is a document created by the ATL and includes followings at least:

- ✓ Product identification: Includes product name, model name, final hardware version, final software version and a description of the product
- ✓ Company information: Includes applicant name, address and contact information
- ✓ Features and Services supported by the product
- ✓ Certification information: TRSL release version, product type and certification type
- ✓ Name of ATL that testing was performed including the test result report
- ✓ Testing information: Includes test dates, test specifications used for the testing, test results and test equipment details
- ✓ ATL declaration indicating if the product complies or does not comply with the certification requirements in accordance with the test procedures and test specifications defined

5.6. Compliance Folder

The Compliance folder is the information required to assess the products comply the oneM2M certification requirements as follows the applicant shall store and submit to CB.

- ✓ Application form.
- ✓ ICS&IXIT document.
- ✓ Test Result Report.
- ✓ Certificate of Conformity.
- ✓ Applicant Declarations including PCD (for Product change and rebranding certification types), if applicable.
- ✓ Approved waivers, if applicable.
- ✓ Product Description / User manual.
- ✓ Other documents (as decided by the applicant).

6. Test Equipment Requirements

In order to reliably and successfully execute the test cases identified by the test specification, designated test equipment may be required.

The CB can qualify the test equipment by including and implementing all category A test cases. Additionally, CB can designate test equipment and it is strongly recommended to use the designated test equipment for certification testing.

The CB does not certify test equipment itself, but qualifies the test equipment based on validated test cases available. A list of qualified test equipment for which validated Test Case exist will be maintained on oneM2M Certification website (www.oneM2Mcert.com).

7. Certification Logo

After certification is awarded by the CB to a specific product, the manufacturer is allowed to use oneM2M Certification logo on the product. The logo may be used as long as the product maintains its oneM2M Certified status.

The Certification Logo may be used in manufacturer's marketing manual.

The Certification Logo is not transferable to another product.

Digital files for preproduction of the logo will be supplied to manufactures upon request.

The CB provides the oneM2M Certification Logo Usage Guideline[8] to explain the usage of the logo in the certified product.

8. ATL Requirements

This section details the requirements to be eligible as ATL that can perform oneM2M Certification

Testing:

- ✓ The ATL shall be a member of oneM2M.
- ✓ **Independency:** The ATL shall not be under direct control or unduly influenced by any production department of any vendor or manufacturer and the ATL shall not be engaged in any activity that may endanger the trust in its independence of judgment and integrity in relation to its testing activities, ATL may lose their status for cause or by request.
- ✓ **Accreditation:** The ATL will have ISO/IEC 17025 accreditation for any testing activities.
- ✓ **Facilities:** The Test Lab facilities shall be able to provide testing activities for oneM2M certification testing, assuring the confidentiality and security of customers, samples, and testing results.
- ✓ **Staff:** The testing staff will have at least 2 years of same or similar experience in testing and certification area as well as proficiency in oneM2M certification process. The testing staff shall have competence in the desired oneM2M testing scope and shall be audited by CB.
- ✓ **Test Equipment:** The ATL shall possess the qualified test equipment by CB which covers all Category A test cases.
- ✓ **Testing Procedure:** The ATL shall have the testing procedure that indicates all process to perform oneM2M test requirements.

In order to become the authorized test lab, the following steps must be completed to be recognized by the oneM2M CB:

- 1) Prepares and setup appropriate test equipment and system for oneM2M certification test scope.
- 2) Fill out the application form and other related documents to be submitted to the CB. (refer to Annex C)
- 3) CB reviews all submitted documents, audit and notify the test lab regarding the status of their application. Onsite audit may be required, if necessary.
- 4) If all requirements are satisfied, test lab will be notified as ATL by the CB and will be listed on the oneM2M website.

9. Annex A. Application Form

Product information	
Product name	Commercial name of the product
Product model	Model identifier
Hardware version	Hardware version of the product to be certified
Software version	Software version identifying all the software elements of the product to be certified
Description	Brief description of the product
Additional product info	Additional information provided by the applicant, such as url, etc.
Applicant information	
Applicant name	
Address	
City	
Postal code	
State/Providence	
Country	
Applicant contact information	
Name	
E-mail	
Phone number	
oneM2M information	
oneM2M release	
Product type	End product / Component
Certification type	New product / Product change / Rebranding
CB and ATL information	
CB (Certification Body)	
ATL (Authorized Test Lab)	

10. Annex B Waiver Request Form

Product information		
Product name:		
Product model:		
Hardware version:		
Software version:		
Parent product (when applicable):		
Applicant information		
Applicant company name:		
Country		
Contact name		
Contact e-mail		
Contact phone number		
Certification information		
Certification ID (if available)		
TRSL version		
CB:		
Product type:	End product / Component	
Certification type:	New product / Product change / Rebranding	
Testing to be waived		
Test spec	Test case ID	Test description
JUSTIFICATION for the waiver		
Additional documentation		
Additional documentation		
oneM2M CB section (to be filled by oneM2M CB)		
Certification ID (if available)		
Date of waiver reception:		
Date of review:		
Decision:	Approve / Reject	
Additional information (if applicable):		

11. Annex C ATL Application Form

Applicant information
Applicant name
Address
City
Postal code
State/Providence
Country
ISO 17025 certificate number
Applicant contact information
Name
E-mail
Phone number
Test equipment information
Model/Manufacturer
Coverage scope
* It should be declared every test equipment information that ATL obtains.

Other documents required:

- ✓ ISO 17025 Certificate
- ✓ Organizational chart for oneM2M ATL
- ✓ Testing procedures for oneM2M
- ✓ CV or Resume of staffs
- ✓ Test Result Report (includes all activated test case)

12. Annex D Product Change Declaration

Applicant information
Applicant company name:
Country
Contact name
Contact e-mail
Contact phone number
Base (Certified) information
Product name
Product model
Product revision
New (Qualifying) information
Product name
Product model
Description
*Please provide a brief description of the new product, its functions and features

■ Revision History

Revision	Date	Comments
V0.1	2016-07-08	Initial version
V0.2	2016-08-31	Updated by TTA
V0.3	2016-09-06	Updated by AT4
V0.4	2016-09-22	Updated by TTA
V0.5	2016-09-28	Add review comments by TTA
V0.9	2016-11-21	TTA Member Review
V0.9_r01	2016-12-21	Logo Change
V0.9_r02	2017-01-31	Updated by TTA
V0.9_r07	2017-02-02	Reviewed by TTA
V0.9_r09	2017-02-06	Final Review
V1.0	2017-02-08	Prepare for publication